

STANDARD DEPARTURE CHART -  
INSTRUMENT (SID) - ICAO

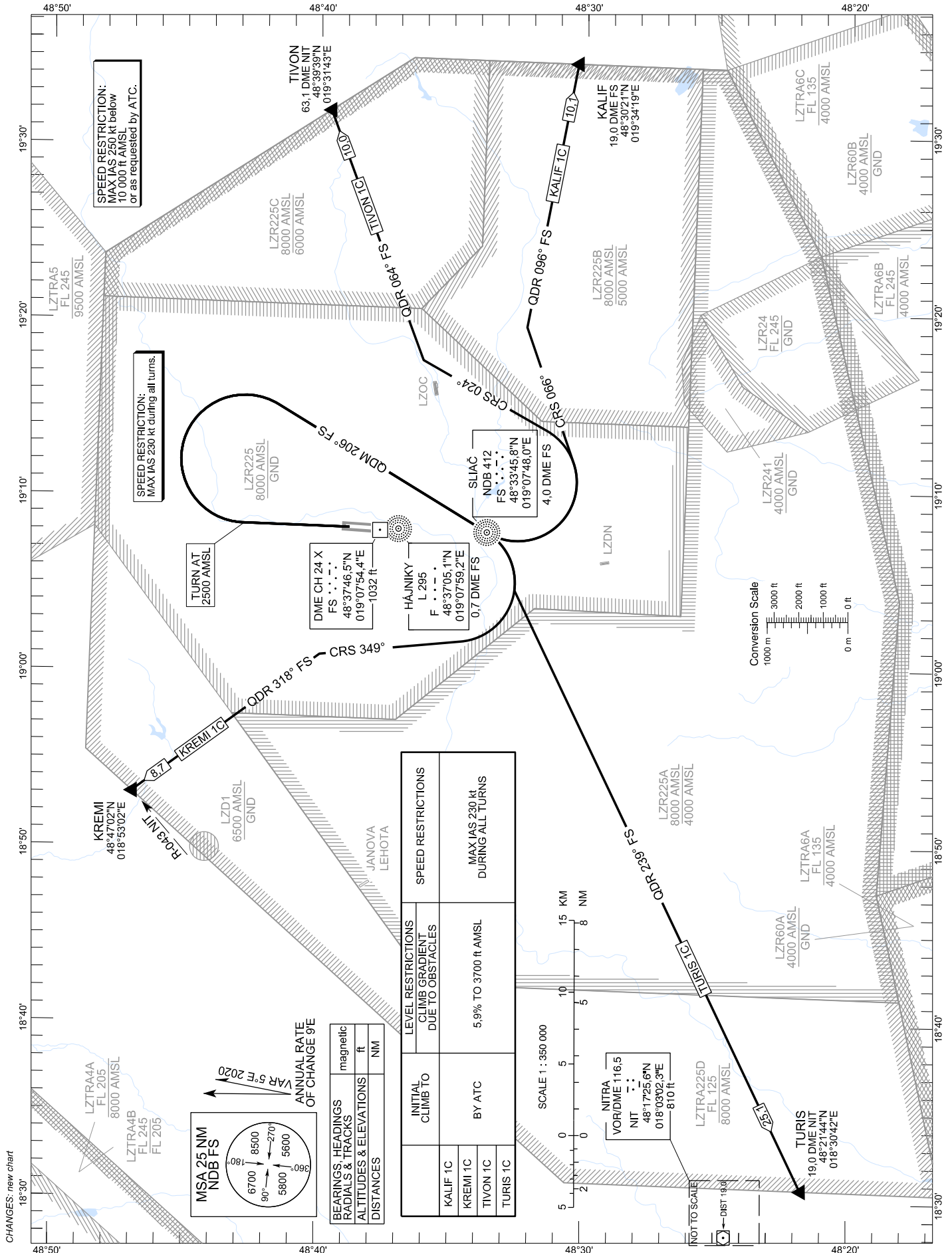
TRANSITION ALTITUDE  
10 000 ft

SLIAČ APPROACH/RADAR 119,155  
SLIAČ TOWER 122,905

SLIAČ (LZSL)  
SID Rwy 36

ACFT CAT A/B/C/D

KALIF 1C, KREMI 1C, TIVON 1C, TURIS 1C via NDB FS



CHANGES: new chart